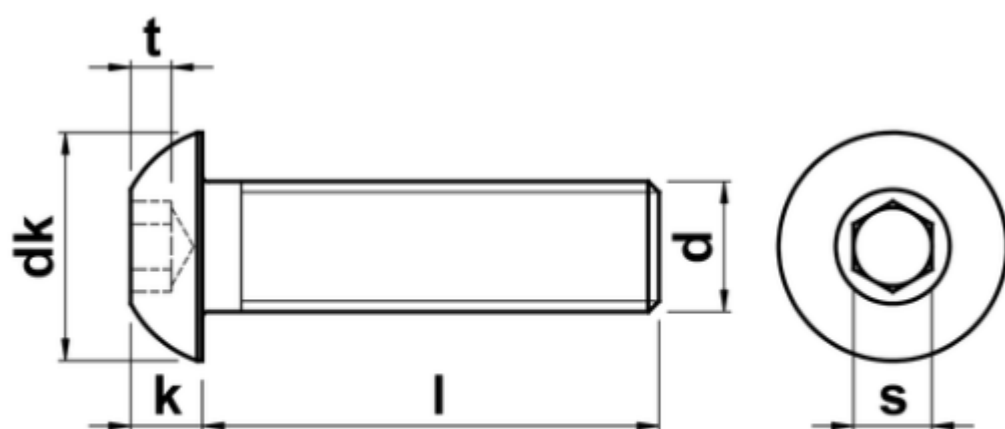


DIN 7380 Skrutka s polguľatou hlavou s vnútorným šesťhranom / Button head socket cap screws without flange



d	thread pitch	dk	k max.	s	t
M2.5	0.45	4.5	1.5	1.5	-
M3	0.50	5.7	1.65	2	1.04
M4	0.70	7.6	2.20	2.5	1.30
M5	0.80	9.5	2.75	3	1.56
M6	1.00	10.5	3.30	4	2.08
M8	1.25	14.0	4.40	5	2.6
M10	1.50	17.5	5.50	6	3.12
M12	1.75	21.0	6.60	8	4.16
M16	2.00	28.0	8.80	10	5.20